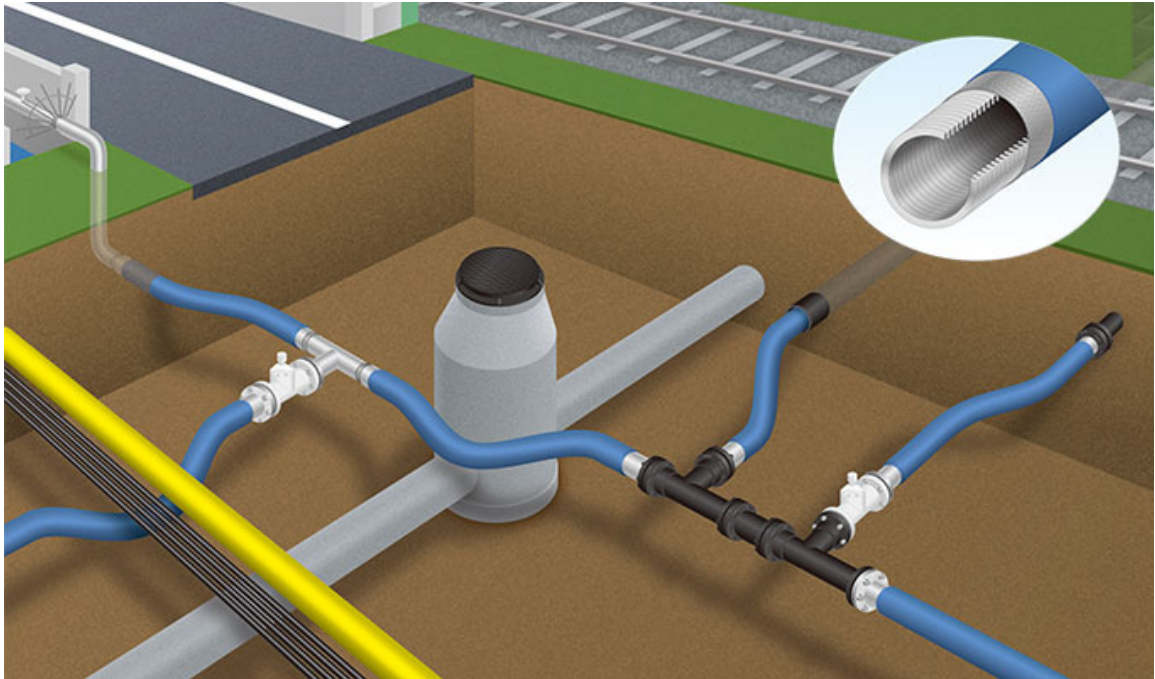




## Dynamic Flexible Pipe

Bend your pipelines past urban obstacles



Stainless steel flexible tubes are a type of distribution pipe designed to navigate and circumvent the obstacles posed by certain installation sites. Their flexibility additionally makes them capable of absorbing soil settlement and seismic activity.



Roadside excavations are fraught with complexities compounded by the fact that these sites often uncover electricity and gas services. Such situations call for a piping solution that can both navigate on-site obstacles, and tolerate soil displacement.

Dynamic Flexible Pipe, despite their smallest diameter starting from 80A, are soft and flexible enough to be bent by hand. This product effectively removes the need for complicated, cumbersome assemblies that utilize pre-shaped elbows. The result is an installation method that greatly eases the hardship of working in cramped and complicated environments.

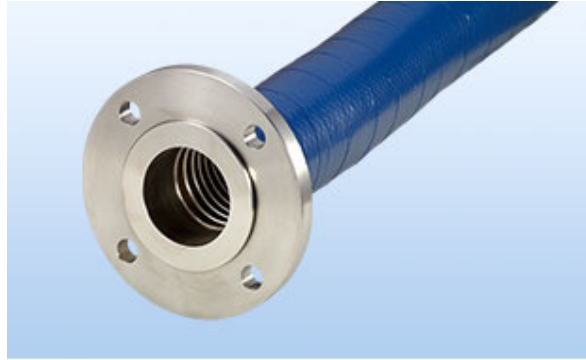
SRS' bellows are made from one of two materials (depending on configuration): SUS316L or SUS304. The flexible tube's triple-layered structure consists of expandable bellows, a stainless blade designed for protection, and an anti-corrosive taping.

The connection points of each tube are configured to our customers' specifications. If necessary, these components can be specially insulated.

Moreover in recent years, we have endorsed this product's usage in the new SDF (Stainless Dynamic Flexible) tube-sheathing method.

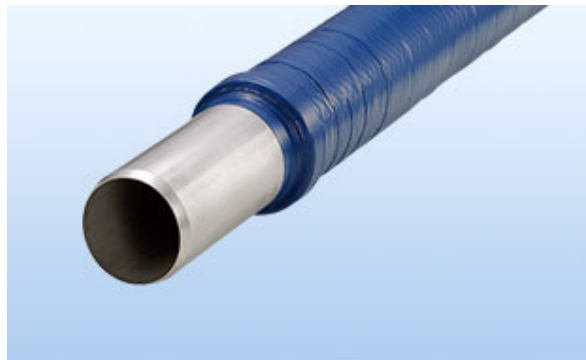
SRS' Dynamic Flexible Pipe, when used in conjunction with the SDF method, allow piping to be threaded through pre-existing pipelines even past 90 degree turns.

SDF Technology Committee: <http://www.sdf.gr.jp/>



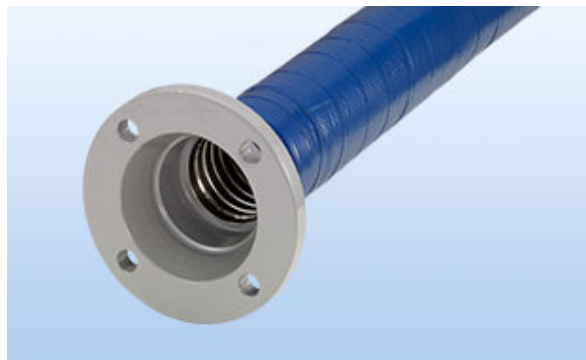
.

Loose Flange



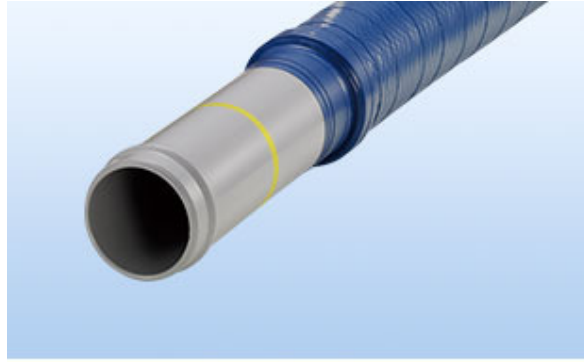
.

Resin-Coated Pipe Inserter



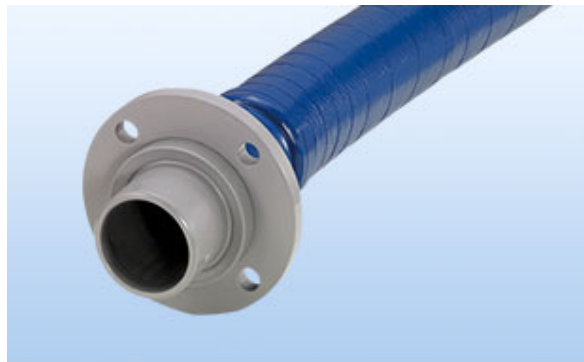
.

Cast-Iron Pipe Receiver  
(K Model)



Cast-Iron Pipe Inserter  
(GX Models)

.



cast-iron pipe (K-model) port

.

#### Common specification

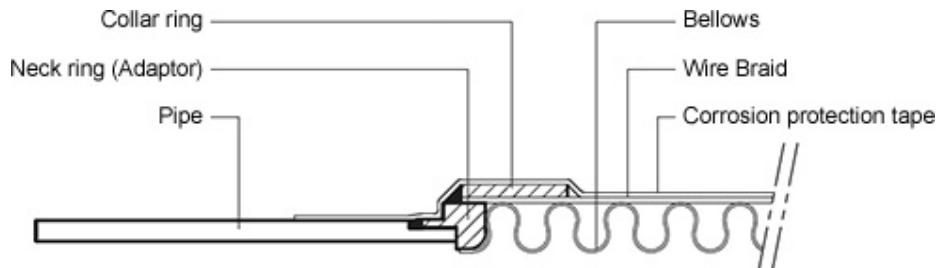
Prior to installation, bellows should be heat-treated at a temperature of 1050°C in vacuum

.

All connections with ductile cast-iron pipes should be insulated with polyethylene sleeves to prevent corrosion.

# Product Specifications

## Dynamic Flexible Pipe



Internal Diameter (Aperture):	80A-350A *
Manufactured Lengths:	1000L-5000L **
Design Pressure:	0.74Mpa ***
Test Pressure:	< 1.18Mpa
Bellows Material:	SUS304 (annealed)/SUS316L (not-annealed)

- \* Configurations above 400A possible
- \*\* Configurations longer than 10000 L and/or with pre-attached T-joint possible
- \*\*\* Configurations of 1.5Mpa possible



Nominal Diameter:	Maximum External Diameter:	Unit Weight (kg/m):	Minimum Bending Radius (mm):
80A	Ø104	5.0	220
100A	Ø130	6.0	280
125A	Ø158	7.5	350
150A	Ø185	10.0	400
200A	Ø235	15.0	600
250A	Ø290	23.0	700
300A	Ø341	31.0	900
350A	Ø383	42.0	1100

**For more information, please call +852 3746 9033**

**or visit [www.alliedpower.com.hk](http://www.alliedpower.com.hk)**

**Allied Power Technology Limited**

**Address : Unit B, 11/F Long To Building, 654-656 Castle Peak Road, Kowloon, H.K.**

**Tel : +852 3746 9033**

**Fax : +852 2120 8765**